



# Adv<sup>✓</sup>ancis

M e d i c a l

new products  
2015/2016



# advazorb border

---

hydrophilic foam dressing with soft silicone wound  
contact layer and border

**Pages 4 - 5**

# advazorb sacral

---

hydrophilic foam sacral dressing with film backing

**Pages 6 - 7**

# eclipse contour

---

super absorbent multisite dressing

**Pages 8 - 9**

# actilite larger sizes

---

non adherent viscose net dressing coated with  
manuka honey and manuka oil

**Pages 10 - 11**

# advazorb border

hydrophilic foam dressing with soft silicone wound contact layer and border



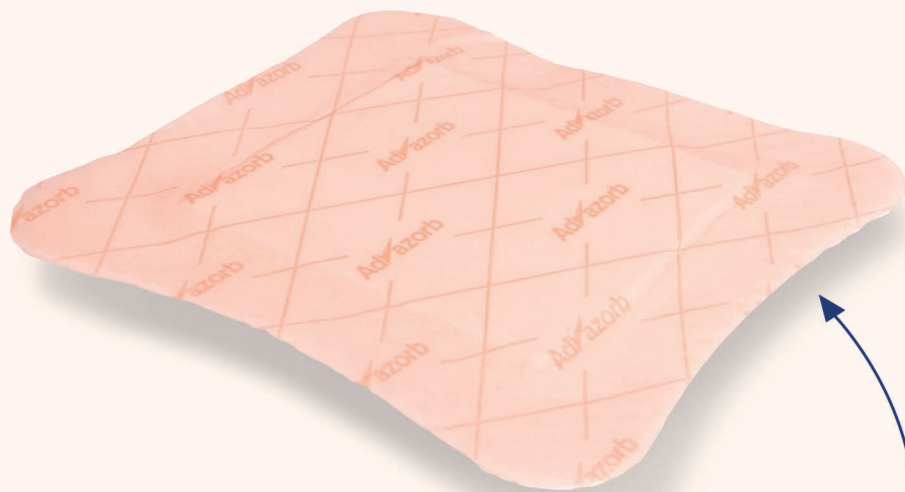
## Product Description

As a result of our continued dedication to innovation in product development, Advancis Medical® has made an enhancement to the existing Advazorb® Border range. Working with clinicians, the new Advazorb® Border has all the advantages of the exiting product, but now has a new ergonomically designed shape, with an increase to the border to allow a securer fixation.



- ✓ The same high quality foam and low friction film, plus a border to eliminate the need for secondary fixation
- ✓ The soft silicone contact layer extends across the entire surface area of the dressing, not just the border, providing secure but gentle adhesion
- ✓ Suitable for hard to dress wounds as a secondary fixation isn't required
- ✓ Minimises the pain and trauma associated with dressing change or removal

Size	Dressings per box	Stock Code
7.5cm x 7.5cm	10	CR4190
10cm x 10cm	10	CR4191
12.5cm x 12.5cm	10	CR4192
15cm x 15cm	10	CR4193
10cm x 20cm	10	CR4194
20cm x 20cm	10	CR4195
10cm x 30cm	10	CR4196



- ✓ Larger ergonomically shaped border around the edge of the dressing for greater adhesion to the skin
- ✓ 2mm perforation holes across the surface area of dressing enabling more silicone to come into contact with the skin



# advazorb sacral

hydrophilic foam sacral dressing with film backing

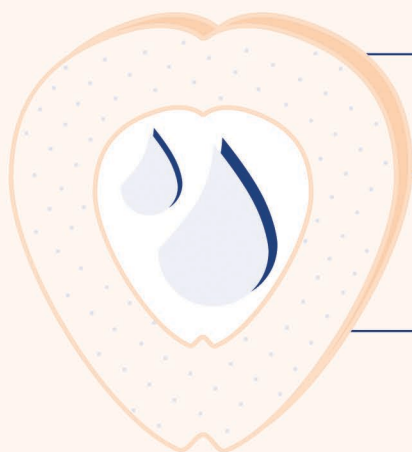


## Product Description

Advazorb® Sacral is a hydrophilic foam wound exudate management dressing for the sacral area, with a soft silicone wound contact layer. Advazorb® Sacral will only adhere to dry skin surrounding the wound and can be easily lifted for adjustment without losing its adherent properties.

The dressing has an absorbent rapid wicking foam moisture locking system for low to medium exudate. The backing is a water resistant barrier film to prevent strike-through with a high moisture vapour transfer rate prolonging wear time.

The silicone wound contact layer has pores to allow the passage of exudate into the absorbent foam whilst protecting the fragile wound bed. This combination ensures the dressings comfortably stay in place whilst minimising the potential for maceration.

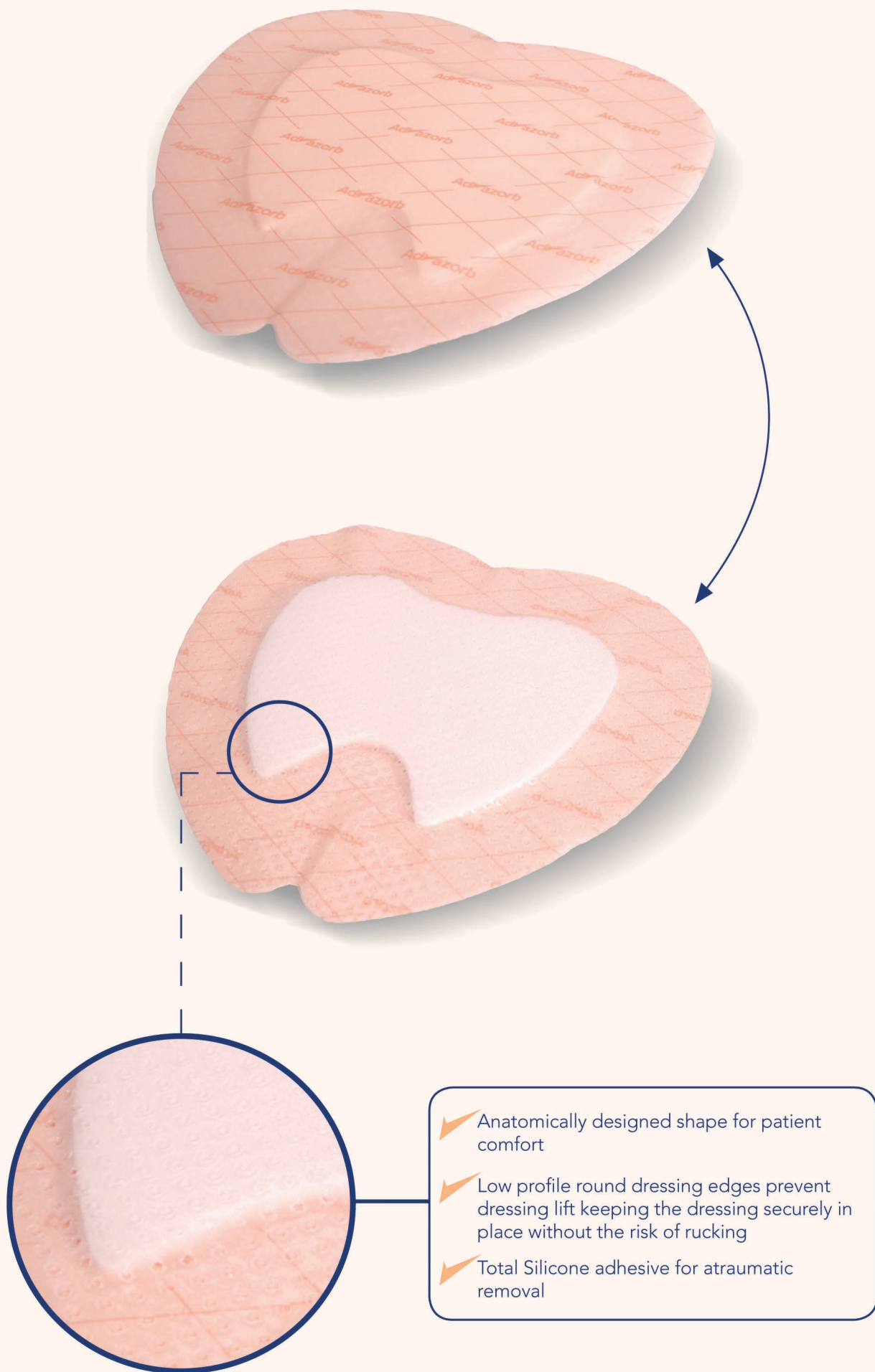


Minimises the pain and trauma associated with dressing change or removal

Prevents disruption of newly formed granulation tissue, helping the healing process

The soft silicone contact layer extends across the entire surface area of the dressing, not just the border, providing secure but gentle adhesion

Size	Dressings per box	Stock Code
17cm x 19cm	10	CR4401
22cm x 23cm	10	CR4402



# eclipse contour

super absorbent multisite dressing

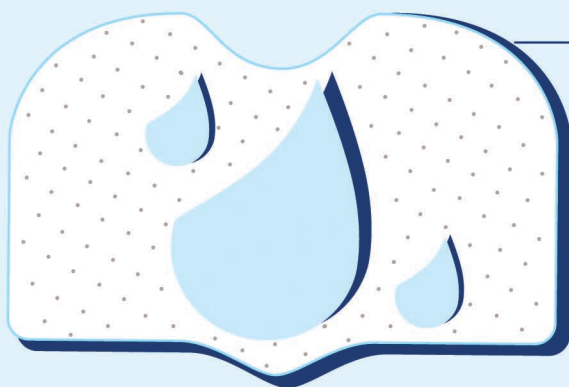


## Product Description

Eclipse® is a highly absorbent, high capacity wound exudate management product designed to absorb fluid, reduce potential leaks and reduce risk of maceration. The dressing has a rapid wicking face combined with the highly absorbent moisture locking system. The absorbent layer provides a large fluid handling capacity with rapid fluid uptake forming a gel when in contact with exudate. The backing is a water resistant barrier film to prevent strike-through with a high moisture vapour transfer rate prolonging wear time.

The Eclipse® Contour dressing provides a completely new and innovative design to the range, which will uniquely mould to the body contours, ensuring optimum contact with the wound and effective exudate management. It is designed to reduce nursing time and the cost associated with this, as the dressing doesn't need to be changed as often. Importantly the patient trauma associated with a high frequency of change is reduced.

The size and shape of the Eclipse® Contour has been specifically designed to treat highly exuding wounds in difficult to dress areas, such as the underarm, abdomen, back, lower leg and thigh.

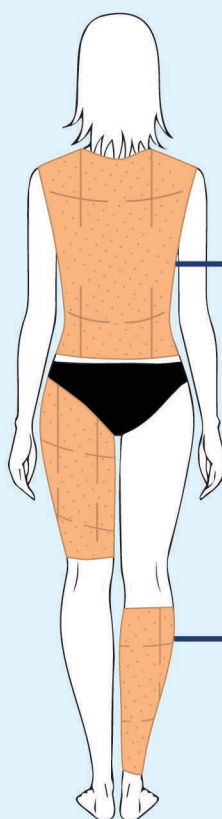
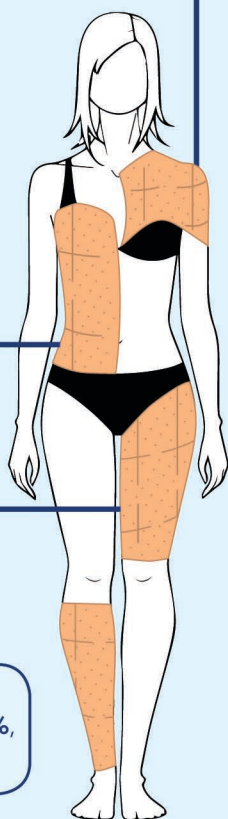


Highly absorbent, breathable non-striekthrough backing, so no need to layer dressings

Thin and conforming for comfort enhancing the patients quality of life

Reduced dressing changes, saving nurse time

Size	Dressings per box	Stock Code
30cm x 51cm	10	CR4398



Eclipse® can be used in conjunction with our range of 100% Medical Grade Manuka Honey antimicrobial products

Eclipse® has seen an increase in the absorbency across the range by 30%, with no impact on cost



**Adv**ancis  
Medical

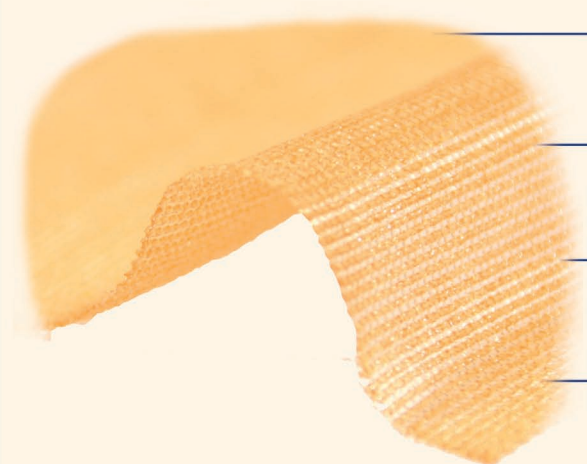
# actilite larger sizes

non adherent viscose net dressing coated with manuka honey and manuka oil

## Product Description

An inexpensive and highly effective broad spectrum antimicrobial dressing containing 99% Manuka honey and 1% Manuka oil for use on low to moderate exuding wounds. The dressing is designed to protect a wound and allow the passage of exudate. It is an ideal choice for epithelialising wounds that are perceived to be at risk of re-infection.

*In-vitro* clinical trials have demonstrated that low concentrations of Advancis Manuka honey prevented biofilm formation in MSSA, MRSA and VRE, whilst still maintaining its antimicrobial properties.



- Lower concentration of honey reduces potential for initial drawing sensation
- Can be used when there is a clinical sign of infection and to prevent re-infection
- Deodorises wounds\*, positively impacting on a patient's quality of life  
\*based on short term *in-vitro* testing
- Maintains a moist wound healing environment, facilitating faster healing of chronic wounds

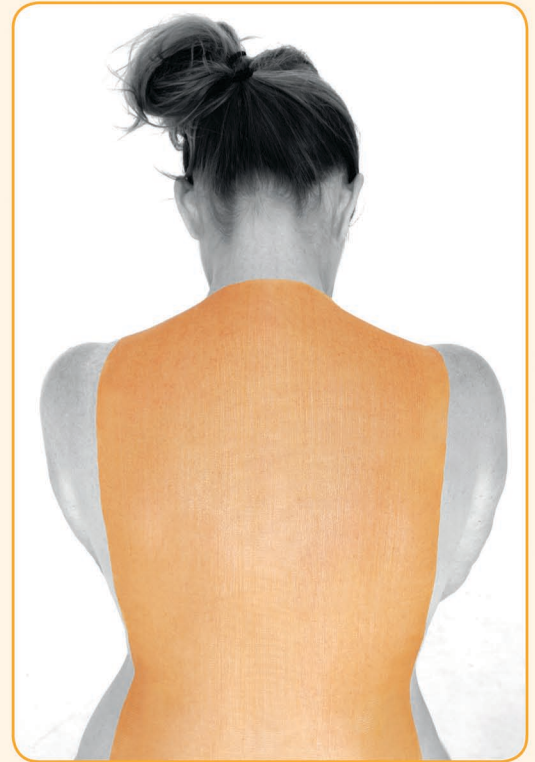
Size	Dressings per box	Stock Code
30cm x 20cm	10	CR4366
30cm x 30cm	5	CR4367
30cm x 60cm	5	CR4368

## the natural alternative to silver

The Activon® range contains all the well-known benefits of manuka honey as a broad spectrum antibacterial product, effective against most wound invading bacteria that are well known in today's healthcare environment. These include *Staphylococcus aureus*, *Pseudomonas aeruginosa*, VRE and possibly the best known, MRSA - challenging the need for routine antibiotics to treat localised wound infection.

Activon® is a natural alternative to the more common wound therapies such as silver, with none of the perceived challenges silver products face today, such as their cost-effectiveness, lack of efficacy and concerns around their safety/resistance<sup>1</sup>

<sup>1</sup>'Is Manuka Honey a Credible Alternative to Silver in Wound Care?' by Cooper Rose; Gray David-Wounds UK 2012



Actilite 30cm x 60cm

Wet ↑

Level of exudate

Dry

## the honey guide to wounds





## WM Bamford & Co Ltd

Head office:

12 Victoria Street  
Private Bag 31346  
Lower Hutt 5040  
Wellington

p: 04 576 2100  
or within NZ: 0800 BAMFORD (0800 2263673)

f: 04 5696489

e: [enquiries@bamford.co.nz](mailto:enquiries@bamford.co.nz)  
or to place an order: [orders@bamford.co.nz](mailto:orders@bamford.co.nz)



[www.bamford.co.nz](http://www.bamford.co.nz)