

# Dermatoscopes

## MORE DETAILS FOR AN EVEN BETTER DIAGNOSIS: POLARISATION, HIGH PERFORMANCE LEDS AND HIGH RESOLUTION OPTICS.

While the rate of new cases of malignant melanoma is increasing worldwide, mortality rates have remained on the same level. This is mainly due to the fact that many countries now pay skin cancer prevention the attention it deserves. With early detection and treatment, long-term survival rates for malignant melanoma are excellent. With its Dermatoscopes, HEINE provides an essential tool in early detection.

The HEINE DELTA 20 Plus sets a new standard and helps doctors to refine their diagnosis in order to save more lives: The possibility to work with polarised light now allows a better visualisation of the crystalline and vascular structures.

### Polarisation and immersion

For the best diagnosis the examination method should be matched with the lesion. Therefore the contact plate can be exchanged and the lesion can be examined with polarisation (without liquids) or with immersion (with liquid).

### New: LED now in HEINE quality

The HEINE mini 3000 LED Dermatoscope: The pocket dermatoscope for rounds with LED illumination. Twice as bright as the conventional XHL Xenon Halogen variant.

### Digital dermoscopic photography

The HEINE SLR Photo Adaptor makes brilliant digital photos of high quality in dermoscopic and clinical photography possible.

LED HQ



## HEINE DELTA® 20 Plus Dermatoscope



NEW!

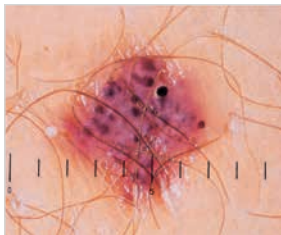
LED



⚡ Polarisation/Immersion

⚡ High performance LEDs

⚡ High-resolution optics



For dermatoscopic examination for early diagnosis of malignant melanoma. Also for the examination of non-melanocytic lesions, basal cell carcinoma and dermatofibroma. The skin surface refracts the light and partially reflects it. That's why either an immersion liquid between the dermatoscope and the skin (for example dermatoscopy oil) or polarised light is needed to observe pigment cells or other structures in the deeper skin layers.

- ⚡ **Immersion and polarisation.** With different contact plates (contact plate N for immersion and contact plate P for polarisation) the examination can be matched with the respective lesion, because some characteristics are more visible when a liquid is used, others under polarised light.
- ⚡ **4 high performance LEDs** produce an absolutely homogenous and bright illumination with excellent colour rendering (Colour rendering index CRI > 87).
- ⚡ **High-resolution optics with achromatic lens system.** 10x to 16x magnification, distortion-free edge-to-edge, very large, highly detailed image.
- ⚡ **Adjustable Eyepiece.** Individual focusing, range of correction -6 to +6 dpt.
- ⚡ **Detailed compendium with photographic atlas included.** Simplifies the differential diagnosis of pigmented lesions.

## DELTA20 Plus Dermatoscope Head

2.5V/3.5V LED

with contact plate P polarisation 23mm dia. with scale and dermatoscopy compendium, without handle	K-008.34.212
with contact plate P polarisation 23mm dia. without scale and dermatoscopy compendium, without handle	K-008.34.213
with contact plate N immersion 23mm dia. with scale and dermatoscopy compendium, without handle	K-008.34.214
with contact plate N immersion 23mm dia. without scale and dermatoscopy compendium, without handle	K-008.34.215
DELTA20 Plus Dermatoscope Head without contact plate	K-008.34.210

## HEINE DELTA® 20 Plus Dermatoscope



Set complete with: **DELTA20 Plus Dermatoscope**  
contact plate for polarisation P 23mm dia. with scale  
dermatoscopy compendium  
hard case



DELTA20 Plus P Sets for polarisation	2.5V	3.5V (NiMH)	3.5V
BETA battery handle	<b>K-258.10.118</b>		
BETA R rechargeable handle for mains socket		<b>K-258.20.376</b>	<b>K-258.27.376</b>
BETA NT rechargeable handle with NT300 charger		<b>K-258.20.420</b>	
BETA L rechargeable handle and NT300 charger			<b>K-258.29.420</b>

Set complete with: **DELTA20 Plus Dermatoscope**  
contact plate for immersion N 23mm dia. with scale  
10 ml dermatoscopy oil  
dermatoscopy compendium  
hard case



DELTA20 Plus N Sets for immersion	2.5V	3.5V (NiMH)	3.5V
BETA battery handle	<b>K-257.10.118</b>		
BETA R rechargeable handle for mains socket		<b>K-257.20.376</b>	<b>K-257.27.376</b>
BETA NT rechargeable handle with NT300 charger		<b>K-257.20.420</b>	
BETA L rechargeable handle and NT300 charger			<b>K-257.29.420</b>

Set complete with: **DELTA20 Plus Dermatoscope**  
contact plate for immersion N 23mm dia. with scale  
contact plate for polarisation P 23mm dia. with scale  
dermatoscopy compendium  
hard case



DELTA20 Plus Sets (polarisation + immersion)	2.5V	3.5V (NiMH)	3.5V
Set C: BETA battery handle	<b>K-260.10.118</b>		
Set B: BETA R rechargeable handle for mains socket		<b>K-260.20.376</b>	
Set A:  BETA L rechargeable handle and NT300 charger and small contact plate, 8mm dia.			<b>K-259.29.420</b>

: Rechargeable handle with charge status display in the bottom insert.

## HEINE DELTA® 20 Dermatoscope

## Dermatoscope with LED illumination

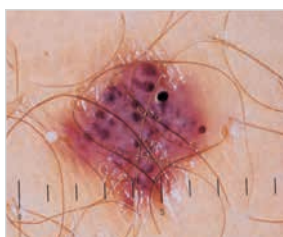
LED HQ



✧ Homogeneous, bright LED light

✧ High-resolution optics

✧ Digital photography





- ✧ **High-resolution optics with achromatic lens system.** 10x to 16x magnification, distortion-free edge-to-edge, very large, highly detailed image.
- ✧ **LED illumination close to daylight.** Full 6 LED illumination or, alternatively, lateral illumination from 3 LEDs for improved contrast, virtually unlimited working life.
- ✧ **Adjustable Eyepiece.** Individual focusing, range of correction -6 to +6 dpt.
- ✧ **Detailed compendium with photographic atlas included.** Simplifies the differential diagnosis of pigmented lesions.
- ✧ **Digital photography with the dermatoscope** when combined with an adaptor for a digital SLR camera.

DELTA20 Dermatoscope Head	2.5V/3.5V LED
with contact plate 23mm dia. with scale and dermatoscopy compendium, without handle	K-008.34.201
same, without scale, without handle	K-008.34.207
DELTA20 Dermatoscope Head without contact plate	K-008.34.202

Set complete with: **DELTA20 Dermatoscope**  
 contact plate 23mm dia. with scale  
 10ml dermatoscopy oil  
 dermatoscopy compendium  
 hard case



DELTA20 Sets	2.5V	3.5V (NiMH)	3.5V 
BETA battery handle	K-256.10.118		
BETA R rechargeable handle for mains socket		K-256.20.376	K-256.27.376
BETA TR rechargeable handle with plug-in transformer		K-256.20.384	K-256.27.384
BETA NT rechargeable handle with NT300 charger		K-256.20.420	
 BETA L rechargeable handle and NT300 charger			K-256.29.420

: Rechargeable handle with charge status display in the bottom insert.

## Accessories

### for the DELTA20 Dermatoscope Plus and DELTA20 Dermatoscope



#### Contact plate for DELTA20 Plus

Polarisation (P) 23 mm dia. with scale [01]	K-000.34.212
Polarisation (P) 23 mm dia. without scale [01]	K-000.34.213
Immersion (N) 23 mm dia. with scale [02]	K-000.34.214
Immersion (N) 23 mm dia. without scale [02]	K-000.34.215
Small contact plate, 8 mm dia. [03] for the examination of inaccessible lesions	K-000.34.205



#### Contact plate for DELTA20

23 mm dia. without scale [01]	K-000.34.203
23 mm dia. with scale [01]	K-000.34.204
Small contact plate, 8 mm dia. [02] for the examination of inaccessible lesions	K-000.34.205



#### Dermatoscopy oil

Pack of 6 x 10 ml. It is applied to the external skin layers, making them transparent.	K-000.34.005
---	--------------



#### SLR Photo adaptor

for Dermatoscope/digital SLR camera, with optics.  
Wide Field of View, crisp image

for Canon	K-000.34.185
for Nikon	K-000.34.186
for Olympus	K-000.34.187



#### Adaptor cord

(1.3 m) for instrument/handle	X-000.99.231
-------------------------------	--------------



#### BETA Belt Clip

for BETA handle	X-000.99.008
-----------------	--------------



#### Photo Accessory Set

includes SLR Photo adaptor, adaptor cord, distance ring and BETA Belt Clip

for Canon	K-000.34.190
for Nikon	K-000.34.191
for Olympus	K-000.34.192

## HEINE mini3000® Dermatoscope

### A Dermatoscope in a handy pocket format



✧ Modern pocket dermatoscope

✧ Solid metal construction

✧ 10x magnification

Modern pocket dermatoscope in a unique, compact design with high-quality optics, 10x magnification with focusing optics, metal instrument head. Can be used with the mini3000 handle system. Handle available in black and blue.

- ✧ **Xenon Halogen bulbs.** Concentrated, bright light for uniform illumination with exact colour rendering.
- ✧ **20,000 ON/OFF** switch cycles guaranteed.
- ✧ **High quality colour-neutral optic system** with achromatic lenses provides **distorsion-free edge-to-edge, sharp images** of the whole area under examination with **10x magnification**.
- ✧ **5 contact plates for the examination to choose from:** contact plates with and without scale which can be autoclaved.
- ✧ **Special small contact plate** for the examination of difficult to access lesions.
- ✧ Detailed dermoscopy compendium.
- ✧ **Replaceable batteries (Size AA)**, or optional rechargeable battery with mini NT table charger\*.
- ✧ **2-piece handle and head.** Easy to maintain, flexible.
- ✧ **Award-winning design.** Maximum quality with minimum dimensions.

mini3000 Dermatoscope	2.5V
with contact plate, mini3000 battery handle with batteries and 10 ml dermatoscopy oil	<b>D-001.78.107</b>
with contact plate <b>with scale</b> , mini3000 battery handle with batteries and 10 ml dermatoscopy oil	<b>D-001.78.109</b>
with contact plate, with bulb, without handle	<b>D-001.78.106</b>
with contact plate <b>with scale</b> , with bulb, without handle	<b>D-001.78.108</b>
XHL Xenon Halogen spare bulb	<b>X-001.88.109</b>



\*To upgrade to a rechargeable instrument, with mini NT table charger, please see page 158.

## HEINE mini3000® LED Dermatoscope

### with LED Illumination in HEINE Quality HQ



- ✧ Maintenance-free pocket instrument
- ✧ Bright LED illumination
- ✧ Up to 10 hours operation time

Modern dermatoscope with maintenance-free LED illumination. Twice as bright as conventional Xenon Halogen dermatoscopes.

All of the features of the mini3000 Dermatoscope, with the addition of:

- ✧ **Maintenance-free**, no need to ever exchange the LED.
- ✧ LED Thermal management for a **consistent light output throughout the whole working life**.
- ✧ High-performance-LED: bright and absolutely homogeneous **illumination with an excellent colour rendering** – colour temperature 4000K, colour rendering index >95.
- ✧ **100 % more light** compared to Xenon Halogen instruments.
- ✧ **Exclusive Battery Performance Indicator**: When the instrument is switched on, the maximum light intensity is shown, then the light intensity is regulated down to the level that corresponds to the current charge status of the battery so you know when your batteries need changing.
- ✧ **Exclusive fade-out function** reduces illumination intensity with battery level to let you know when to replace.
- ✧ **Operation time up to 10 hours**. The batteries need to be changed less often and the rechargeable batteries last longer.

mini3000 LED Dermatoscope	2,5V
with contact plate, mini3000 battery handle with batteries and 10ml dermatoscopy oil	D-008.78.107
with contact plate <b>with scale</b> , mini3000 battery handle with batteries and 10ml dermatoscopy oil	D-008.78.109
with contact plate, with bulb, without handle	D-008.78.106
with contact plate <b>with scale</b> , with bulb, without handle	D-008.78.108



Set complete with: **mini3000 LED Dermatoscope**  
with contact plate without scale, 10ml dermatoscopy oil, zipper case

mini3000 LED Dermatoscope Set	2,5V
mini3000 Battery handle with batteries	D-887.78.021



\*To upgrade to a rechargeable instrument, with mini NT table charger, please see page 158.





Accessories

for mini 3000 LED Dermatoscope and mini 3000 Dermatoscope



[01]



[02]

Contact plate

without scale [01]	D-000.78.116
with scale [01]	D-000.78.117
Small contact plate, 8 mm dia. [02] for the examination of inaccessible lesions	K-000.34.008



[03]

Dermoscopy oil

(pack of 6x 10ml) is applied to the external skin layers, making them transparent	K-000.34.005
--	--------------