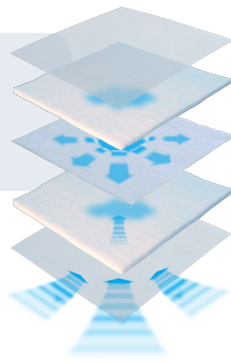


Additional products from Advancis Medical

Advadraw®

Rapid capillary action dressing



Product description

An absorbent, non-adherent dressing with a rapid wicking effect. Advadraw® has a unique integrated central wicking layer between absorbent polyester/viscose fibres lined with perforated non-adherent film.

Fluid from the wound bed is rapidly absorbed into the dressing and distributed by the central layer resulting in sustained movement of exudate from a wound bed.

The wicking of fluid from the wound bed will promote autolytic debridement, deslough and debride wounds and help remove bacteria in the exudate.

Dressing features

- Rapid absorption
- Draws in exudate
- Capillary action
- Non-adherence
- Easy to cut
- Soft and conformable
- Highly absorbent

Advasil Conform®



Silicone gel sheet for scar management

Product description

Advasil Conform® is a sheet of medical grade self-adherent silicone gel designed for the improved management of scar tissue or recently healed wounds. The conformable layer of translucent (Silfix®) silicone gel and a smooth polyurethane outer layer improves wearability and patient compliance.

Silicone gel sheets are reported to help reduce the effects of scarring if worn for prolonged periods. Hypertrophic and keloid scarring may particularly benefit from Advasil Conform®.

Dressing features

- Can be shaped to optimise coverage of scar tissue
- Conformable
- Washable
- Reusable for up to 28 days
- Self-securing with gentle release

Advadraw Spiral®

Rapid capillary action ribbon



Product description

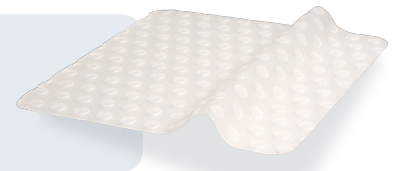
An absorbent, low adherent dressing with a wicking effect, presented in a spiral ribbon form. The dressing comprises of a soft viscose and polyester fibres with a central wicking layer with a perforated permeable wound contact layer. The unique spiral shape allows the dressing to be easily cut to length for insertion into cavity wounds or conform to deep wound beds.

Fluid from the wound bed is rapidly absorbed into the ribbon and distributed by the central layer, resulting in sustained movement of exudate from a wound bed. This helps to manage exudate levels and promote autolytic debridement.

Dressing features

- Rapid absorption
- Draws in exudate
- Capillary action
- Can be used directly on the wound bed
- Soft and conformable

Vellafilm®



Semi-permeable adherent silicone film dressing

Product description

Vellafilm® is a polyurethane film dressing with Silfix® soft silicone contact layer, designed to protect the wound whilst minimising the pain and trauma associated with dressing change. The soft silicone adheres to surrounding dry skin but not to a moist wound.

The dressing is transparent, allowing observation of the wound site or primary dressing which minimises dressing change frequency. Vellafilm® has a very high moisture vapour transfer rate.

Dressing features

- Transparent
- High MTVR
- Bacterial barrier
- Atraumatic soft silicone, reduced pain on dressing change
- Soft and conformable
- Adheres only to dry skin
- Reduces shear and friction

Siltape®

Soft silicone perforated tape



Product description

Siltape® is made from soft silicone which is gentle on the skin, this is particularly useful in patients with very thin, friable skin which is vulnerable to damage. Silicone does not cell strip in the same way that other adhesives may damage tissue.

Dressing features

- Atraumatic soft silicone, reduced pain on change, adjustment or removal
- Soft and conformable
- Adheres only to dry skin, not to a moist wound
- Easily adjustable with no loss of adherence

Kikuhime®



Product description

Kikuhime® is easy to use and gives remarkably accurate results*. This device is an essential tool for practitioners wishing to ensure that the correct level of sub-bandage pressure is being achieved to improve venous return and promote the healing of venous leg ulcers.

* Makoto TAKAHASHI *and Sanae, Biomedical Systems Engineering, Graduate School of Engineering, Hokkaido University, Japan

Kit Contents

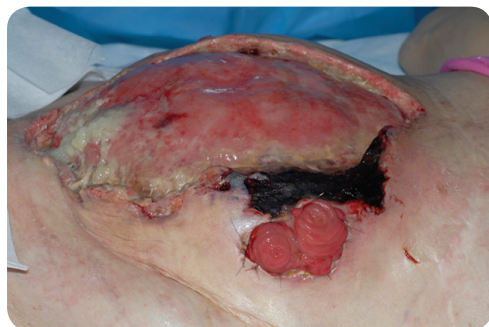
- 1 x Kikuhime® pressure monitor
- 1 x small sensor
- 1 x large sensor
- 1 x slip sheet
- 1 x screwdriver (for calibration)
- 1 x convenient zip carry bag
- 1 x safety clip (to secure to clothing or bedsheets)

Successful exudate management of a dehiscd abdominal wound using Advadraw® & Advadraw Spiral®

The case study presented here relates to the use of Advadraw® on a dehiscd abdominal wound with the added complication of the loss of peri stomal skin.

22/05/08

A female patient aged 51 presented with a dehiscd abdominal wound post renal transplant, which required further abdominal surgery and formation of a stoma and ileostomy.



29/05/08

The wound edges became necrotic resulting in further surgical debridement. The patient was initially treated with VAC following debridement.

15/06/08

Due to the absence of peri stomal skin difficult wound management decisions were made. Initially topical negative pressure was applied to aid granulation tissue formation, and the stoma was isolated.

09/07/08

The topical negative pressure was discontinued as the wound began



to granulate, but the exudate posed a clinical challenge. Advadraw Spiral® was applied at the base of the wound and a hole was easily cut out of the Advadraw® to isolate the stoma. The dressing was then secured with adhesive film and the stoma device applied. Initially the dressings were renewed daily.

29/07/08

The exudate was successfully managed, and epithelialisation occurred. The wound bed continued to improve and successful coverage with a skin graft was completed on the 16/08/08.

Discussion and Conclusion

The application of Advadraw® successfully managed the high levels of exudate in a dehiscd abdominal wound without adhesion and was easily removed. This prevented further wound deterioration and avoided any infection.

Product sizes and codes

Product	Size	Stock code	Dressings per box	PIP code	NHS code
<i>Advasil Conform®</i>	10cm x 10cm	CR3845	5	301-1640	EKH006
<i>Advasil Conform®</i>	10cm x 15cm	CR3832	5	329-5979	ELY178
<i>Advadraw®</i>	5cm x 7.5cm	CR3746	10	304-3759	ELY174
<i>Advadraw®</i>	10cm x 10cm	CR3747	10	304-3783	ELY175
<i>Advadraw®</i>	10cm x 15cm	CR3748	10	304-3809	ELY176
<i>Advadraw®</i>	15cm x 20cm	CR3822	20	329-5961	ELY287
<i>Advadraw Spiral®</i>	0.5cm x 40cm	CR3799	10	314-8640	ELY198
<i>Vellafilm®</i>	12cm x 12cm	CR3919	10	338-4351	-
<i>Vellafilm®</i>	15cm x 20cm	CR3921	10	338-4369	-
<i>Vellafilm®</i>	12cm x 35cm	CR3917	10	338-4377	-
<i>Siltape®</i>	2cm x 3m	CR3938	1	344-0336	-
<i>Siltape®</i>	4cm x 1.5m	CR3939	1	344-0328	-

Frequently asked questions...

How should I secure the Advadraw® dressings?

This will depend on the anatomical position, aetiology and size of the wound. This is a matter for clinical preference but Advadraw® can simply be held in place with a bandage, film dressing, surgical tape or secondary dressing of choice e.g. an adhesive foam dressing. Advadraw® can be used under compression as this does not affect the absorption or wicking properties.

When should I change the Advadraw® dressings?

The dressing must be changed at least every seven days but this will depend on a number of factors e.g. the level of exudate and interstitial fluid, number of dressings that are layered, level of necrotic and sloughy tissue to be removed from the wound bed. Advadraw® must either be changed or additional layers applied when exudate has reached the outer edges of the dressing.

Is Advadraw® cost effective?

Compared with many dressing regimens using Advadraw® is very cost effective. Advadraw® is manufactured with cost effectiveness in mind and is simple to use and versatile. Consider the following important aspects of wound management - ability to manage the wound environment e.g. exudate management, capacity of the dressing, maintaining a moist healing environment, non-adherence, conformability, minimal disturbance to wound bed, provide thermal insulation, debride necrotic and sloughy wounds, retain integrity on removal. How many other dressings can provide so much at such a competitive price?

Advadraw® or Advadraw Spiral®?

Rapid capillary action technology is indicated for most exuding necrotic or sloughy wounds including pressure ulcers, leg ulcers, dehiscent surgical wounds and diabetic foot ulcers. Advadraw® and Advadraw Spiral® can be used on the same wounds, select Advadraw Spiral® if the increased conformability of the shape is desirable but is especially indicated for sinus cavities.

When should I use Advadraw®?

Use on any exuding wound, especially where there is some necrotic or sloughy tissue present. It is particularly useful where the wound is an irregular shape as Advadraw® can be easily cut to the shape of the wound. As it draws fluid into the dressing an exact wound profile is not essential, it may be beneficial to overlap the peri-wound area with Advadraw®. Fluid is drawn vertically into the dressing and there is no lateral movement of fluid at the wound interface which could cause maceration.

What is Advadraw® made from?

Advadraw® is made from a triple layer of polyester and viscose fibres with a perforated wound contact polymer film either side to prevent adhesion of newly formed tissue to the dressing. The non-adherent film will readily allow the passage of fluid but prevent granulating tissue adhering to the dressing. The method of manufacture is a trade secret as the properties are achieved through a unique combination of fibrous layers.