

Advanced veterinary wound care



A proud partnership...

Dechra Veterinary Products are pleased to be working with **Advancis Medical** who are dedicated to the improvement of wound care through the continuous development and production of quality products specifically designed to manage the demands of modern wound care.

Activon medical grade Manuka honey (Unique Manuka Factor +12)

Advancis was the first medical device manufacturer to recognise the potential of Manuka honey and develop it into a safe CE marked medical device for application to wounds. The honey is available in products designed for easy application to wounds. Activon Tulle, Activon in a tube and Algivon have been established as market leaders in human chronic wound management.

Atraumatic exudate management

Eclipse is a super absorbent dressing for the rapid uptake of exudate, with unique fluid handling capabilities. This dressing combines a high capacity for exudate with a unique gel-forming absorbent material to reduce potential for damage to newly formed tissue. Eclipse Adherent combines Silfix® soft silicone adhesion technology with Eclipse.

Hydrophilic foam dressing

Advazorb Plus is a superb hydrophilic foam dressing which will maintain a moist wound healing environment and provide wound protection.

Atraumatic silicone contact layer

Silflex is a polyester mesh coated with Silfix® soft silicone which will adhere to the surrounding skin but not to the wound bed itself. Minimises trauma at dressing change.

Contents

Introduction to veterinary wound management	p3
Dressing selection guide	p3
Product - Activon® Manuka honey	p4
Product - Advazorb Plus®	p5
Product - Siltape®	p5
Product - Eclipse®	p6
Product - Eclipse Adherent®	p6
Product - Silflex®	p6
Use of Citrugel® on an equine trauma wound	p5
Use of Activon®, Eclipse & Advazorb Plus® on canine bite wounds	p7
Use of Activon Tube® & Algivon® following a canine RTA	p7



An introduction to veterinary wound management

Animal wounds are a common occurrence in veterinary practice and are most likely traumatic or resulting from surgical procedure. Clinical management aims to provide a rapid return to function while eliminating risks of delay.

Research by George Winter in the 1960's pioneered the moist wound healing principle and since then many other researchers have followed, stating that a moist environment encourages essential cellular activity, collagen formation and vital contraction processes. Wound dressings have subsequently developed to manage the wound environment more actively, by managing the factors associated with delayed healing.

The need for specific properties varies according to the wound and different wounds will require different dressings at different stages to get the best results. Advanced dressings are principally designed to actively re-hydrate or to absorb and retain excess wound fluid as well as protecting against further trauma. They may also be required to manage infection, contamination and inflammation.

There are several key principles to adopt when using advanced dressings which will maximise the outcome and make for easy application and removal.

Preparing the wound to heal

In all cases a full patient history should be attained to establish related or unrelated conditions that may affect healing, management or recovery.

Prior to examination the area around the wound should be clipped with a generous margin so that the extent of injury is visible and to allow the dressing to overlap the wound by at least 2cm. To minimise unnecessary contamination of the wound during clipping a generous layer of Citrugel can be applied to the wound surface. Loose clippings will be caught by the gel and can be washed off easily before further treatment.

Considerations

Tendon, ligament and bone structures benefit from being covered with a generous layer of Citrugel prior to dressing (see p5), regardless of the exudate level, as this will protect against trauma, dressing adhesion and dehydration.

Common causes of delayed healing in animal wounds:

Dehydration of the wound environment
Maceration of the wound environment
Contamination or infection within the wound
Foreign material, devitalised tissue and wound debris
Physical interference, friction and movement
Compromised blood flow
Dehydration (Physiological)
Poor nutrition
Lack of immune response

Wound	General guide to preparation prior to dressing:
Early traumatic wounds (less than 4 hours old)	Wounds that are treated within 4 hours of occurring have a good chance of uneventful direct closure. The wound should be generously lavaged using saline and explored to establish the extent of trauma and any presence of foreign material. Anaesthesia may be required to do this effectively. Closure may be achieved by surgical means if the wound is sufficiently clean and enough viable tissue is available.
Long-standing traumatic wounds	Wounds that are over a day old may begin to show signs of deterioration in the form of contamination, infection and dead or devitalised tissue. The wound should be explored thoroughly and non-viable tissue removed. Anaesthesia is likely to be required to examine the extent of injury thoroughly. Thorough lavage with normal saline is recommended.
Surgical wounds	Surgical wounds, following closure should be simply cleansed with normal saline and patted dry with woven gauze prior to dressing.

Dressing selection guide

Product	Necrotic	Sloughy	Contaminated/ Infected	Granulating	Epithelialising	Exuding	Delicate tissue/grfts
Activon Tube	Yes	Yes	Yes	Yes			Yes
Activon Tulle	Yes		Yes	Yes			Yes
Algivon	Yes	Yes	Yes			Yes	
Eclipse		Yes	Yes			Yes	
Eclipse Adherent		Yes	Yes			Yes	Yes
Advazorb Plus			Yes	Yes	Yes		
Citrugel	Yes			Yes	Yes		Yes
Silflex				Yes	Yes		Yes

Activon honey

100% pure Manuka honey

Activon honey in a 25g tube

Activon honey is a medical grade Manuka honey which has a reliable level of antibacterial potency not found in other honeys. Through osmotic action attributable to the high sugar levels in the antibacterial Manuka honey, exudate will be drawn from the wound into the dressing, which promotes autolytic debridement. Activon will maintain a moist environment and will help improve the condition of the wound bed. Activon honey benefits patients with wounds in a number of ways - see features list below.

Activon Tulle

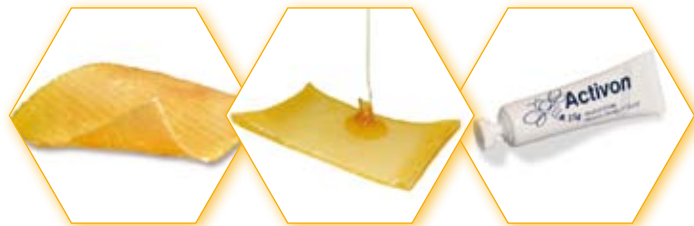
Activon dressings are designed to retain Activon honey at a wound site, protect a wound, create a moist healing environment and form a barrier which effectively reduce or eliminate wound odour.

Activon Tulle is a triple layer primary wound dressing gauze and can be unfolded to wrap around a limb. Additional layers should be applied to maintain osmotic pressure.

Algivon

An absorbent, sterile, non-adherent wound contact dressing comprising calcium alginate (High M) fibres impregnated with Activon Medical Grade Manuka honey.

Algivon dressing has absorbent properties ideal for use on wounds that are exuding, which is common with bacterial contamination or infection.



Antibacterial

Unique non-peroxide factor in active Manuka honey.

Osmotic effect

Draws fluid from the wound bed, promoting autolytic debridement.

Enhanced healing

Honey is rich in water soluble antioxidants and provides favourable conditions that promote granulation and epithelialisation.

Odour reduction

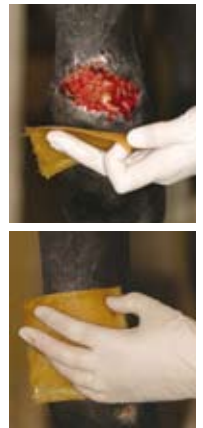
Rapid reduction and elimination of wound odours.

Product	Size	Stock code	No. per box
Activon Tube	25g	CR3830	12
Activon Tulle	5cm x 5cm	CR3761	5
Activon Tulle	10cm x 10cm	CR3658	5
Algivon	5cm x 5cm	CR3831	5
Algivon	10cm x 10cm	CR3659	5

Use of Activon Tulle in an equine limb wound

Applying Activon Tulle or Algivon

- Open the dressing pack after the wound has been cleansed and examined.
- Apply the dressing directly to the wound allowing the dressing to overlap the wound edge by a minimum of 2cm.
- For large wounds more than one dressing may be required to ensure the wound area is fully covered.
- For smaller wounds the dressing may be cut to size using sharp scissors or folded to fit.



Dressing Changes

- Remove the dressing by gently lifting from one of the corners.
- The properties of honey will likely cause the wound to appear moist and 'gooey'. The beneficial osmotic action of the honey will have drawn exudate and debris from the wound and should be removed using saline.
- As the wound reduces in size exudate levels should decrease and the dressing can be left in place for longer between changes.
- Honey dressings are unlikely to adhere to the wound due to their osmotic properties. However, should this occur gently irrigate the dressing area with saline and consider applying a layer of Activon Tube Honey to the wound prior to redressing.

Secondary dressings:

- Use an absorbent secondary dressing to allow for an increase in initial exudate level. This is due to the osmotic effect of the Manuka honey and is beneficial in nature. Advazorb plus or Eclypse Adherent are suitable for use over the Activon honey range.
- It is recommended that dressings are reviewed at one to two days initially to observe wound progression and ensure adequate exudate management.
- As the wound begins to heal the dressings may be left in place for up to five days.



Appearance at first dressing change.



Appearance after cleansing and loose tissue debridement at 1st dressing change.



Wound at third dressing change (seven days). Wound is clean and contracting. Further debridement between dressing changes is not required.

Acknowledgements: Professor Derek Knottenbelt OBE, BVMS, DVM, DipECEIM, MRCVS Philip Leverhulme Hospital, University of Liverpool.

Advazorb Plus

Moist wound management

Product description

A film backed, conformable, low-adherent, hydrophilic, polyurethane foam wound dressing. Advazorb Plus has high fluid absorbency and retention characteristics.

It is a flexible and effective dressing suitable for a wide number of applications. It will effectively manage exudate and maintain a moist wound healing environment.

Advazorb Plus can be used as a primary dressing on exuding wounds, or as a secondary dressing over products such as Citrugel. It can be cut to shape if required and can be held in place through normal bandaging techniques or stay sutures. Advazorb Plus is ideal for providing a moist wound environment whilst protecting the wound.



Benefits

- ✓ **Reduces excess fluid at the wound site**
- ✓ **Helps maintain a moist environment**
- ✓ **Gentle and conformable**
- ✓ **Protects wound**

Product	Size	Stock code	No. per box
Advazorb Plus	5cm x 7.5cm	CR3895	10
Advazorb Plus	10cm x 10cm	CR3882	10
Advazorb Plus	15cm x 15cm	CR3893	10



Siltape

Soft silicone perforated tape

Product description

Siltape is a soft silicone fixation tape delivered on a handy roll with perforations for ease of use, no scissors are required.

Siltape can be used in any situation where a regular adhesive tape would be used. It is particularly useful where friable or sensitive skin is an issue.



Benefits

- ✓ **Atraumatic soft silicone, reduced pain on change, adjustment or removal**
- ✓ **Soft & conformable**
- ✓ **Adheres only to dry skin not to a moist wound**
- ✓ **Easily adjustable with no loss of adherence**

Product	Size	Stock code	No. per box
Siltape	2cm x 3m	CR3938	1
Siltape	4cm x 1.5m	CR3939	1

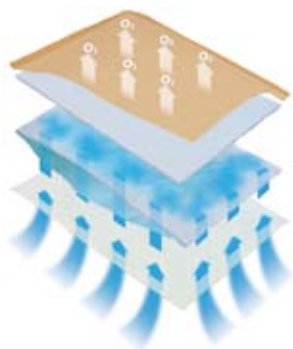
Eclipse

High exudate management

Product description

Eclipse is a highly absorbent, high capacity wound exudate management product designed to help reduce potential fluid leaks and reduce risk of maceration.

The dressing has a rapid wicking action combined with a secondary highly absorbent layer. The dressing provides a large capacity with an ability to take on fluid quickly. The backing is a fluid repellent film designed to prevent strike-through and resist abrasion.



Product	Size	Stock code	No. per box
Eclipse	10cm x 10cm	CR3818	20
Eclipse	15cm x 15cm	CR3769	20
Eclipse	20cm x 30cm	CR3743	20

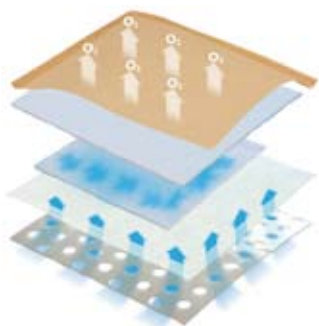
Eclipse Adherent

with Silfix® soft silicone contact layer

Product description

Eclipse with Silfix® soft silicone technology. The soft silicone layer provides convenient gentle adherence and will not stick to a wound or damage the surrounding skin or hair.

Particularly suited to equine limb wounds, Eclipse and Eclipse Adherent are designed to absorb and retain fluid from medium to highly exuding wounds. Eclipse Adherent gently but effectively adheres to clipped fur preventing slippage and movement after bandaging. Eclipse can be used for highly exuding wounds in small and large animals.



Product	Size	Stock code	No. per box
Eclipse Adherent	10cm x 10cm	CR3881	10
Eclipse Adherent	10cm x 20cm	CR3883	10
Eclipse Adherent	15cm x 15cm	CR3863	10
Eclipse Adherent	20cm x 30cm	CR3864	10

Benefits

- ✓ **Rapid absorption**
- ✓ **High capacity**
- ✓ **Fluid repellent backing**
- ✓ **Strength and durability**
- ✓ **Thin and conforming**

Silflex

Soft silicone wound contact layer

Product description

A wound contact non-adherent dressing made from polyester mesh coated with Silfix® soft silicone.

Silfix® is designed to gently adhere to the skin surrounding a wound and not to the wound bed. This is an atraumatic¹ dressing which means it is designed to minimise the pain and trauma associated with dressing change. The dressing allows the passage of exudate.



Indications

- ✓ **Surgical wounds**
- ✓ **Second degree burns**
- ✓ **Skin Grafts**
- ✓ **Any delicate tissue**

Benefits

- ✓ **Adheres only to dry skin not to a moist wound**
- ✓ **Atraumatic soft silicone, reduced pain on dressing change**
- ✓ **Allows passage of exudate**
- ✓ **Hydrophobic Silfix® soft silicone coating**
- ✓ **Soft and conformable**

Product	Size	Stock code	No. per box
Silflex	8cm x 10cm	CR3923	10
Silflex	12cm x 15cm	CR3924	10

What is special about Silfix® soft silicone?

Many traditional dressings and adhesive products contribute to increased pain and trauma on dressing change. As dressing technology advances the issue of painful dressing changes that were once associated with wounds can now be largely alleviated with proper dressing selection.

Soft silicone is hydrophobic and does not stick to a moist wound only to the surrounding dry area. Silfix® helps to maintain a moist wound healing environment and makes it ideal technology for non-adherent wound contact dressings. Silfix® dressings will not damage newly formed granulating tissue or epithelial cells.

Silfix® dressings will not lose their adhesion after initial application. This can help achieve optimum dressing positioning without wastage.

Silfix®
soft silicone

Use of Activon, Eclypse & Advazorb on canine bite wounds

Presentation

The patient (12 year old female Lurcher) presented with a four day old bite wound that the owner had previously been treating themselves at home.

Management

The initial clip and clean revealed 2 bite wounds, the larger measuring 2.5cm x 1cm and 0.5cm deep. The smaller more superficial wound measured 1cm x 1cm. Both wounds were inflamed with necrotic areas and debris present. (Fig 1)

The necrotic tissue was debrided and the wound thoroughly lavaged with warm Hartmanns. The wound was then dressed with Activon Medical Grade Manuka Honey (Unique Manuka Factor +12) and covered with a layer of sterile swab. An Eclypse Adherent was used as a secondary dressing to absorb exudate and to hold the whole dressing in place. (Fig 2) Elastoplast was used to provide additional security. The dressing remained in place for 36 hours but had come off prior to its planned removal. The wound was again lavaged and it was then showing signs of granulation and contraction. (Fig 3)

It was then redressed with Activon and this time Advazorb Plus hydrophilic foam dressing was used as a secondary layer due to the lower levels of exudate that were present. Dressing change was planned for 4-5 days and the owner was advised to bathe the wounds in warm water and dress with Activon should the dressings come off.

The second dressing remained in place for 2 days, unfortunately the dog returned from the garden without it on the second day. The owners followed the advice to lavage and apply Activon twice daily and the wounds continued to improve. After 6 days of further Activon treatment the smaller wound was completely re-epithelialised and the larger wound was partially healed. (Fig 4)

Outcome

The wound went onto fully heal despite having spent a considerable time without a dressing in place. The wound was at significant risk of infection but the Activon Medical Grade Manuka Honey (Unique Manuka Factor +12) helped to prevent infection developing.

Dressing summary

The Activon Medical Grade Manuka Honey (Unique Manuka Factor +12) was used to help manage the local infection risk within the wound due to its antibacterial properties transferred from the nectar of the Manuka Bush. Autolytic debridement was also aided by the Activon as the high sugar level of 80% has an osmotic action of drawing fluid from the wound and softening and lifting necrotic tissue. The Eclypse Adherent dressing absorbed and helped to lock away the exudate initially and the Advazorb Plus foam dressings helped to protect the wound later on.



Alison King RVN, Animal Medical Centre www.vetwoundlibrary.co.uk Dog #60

Use of Activon & Algivon following a canine RTA

Presentation

The male patient (Crossbreed) presented with a wound to its left fore following an RTA (Fig 1)

Management

Initially the wound was debrided and cleaned with the patient under general anaesthetic and then dressed with Activon Medical Grade Manuka Honey (Unique Manuka Factor +12). (Fig 2)

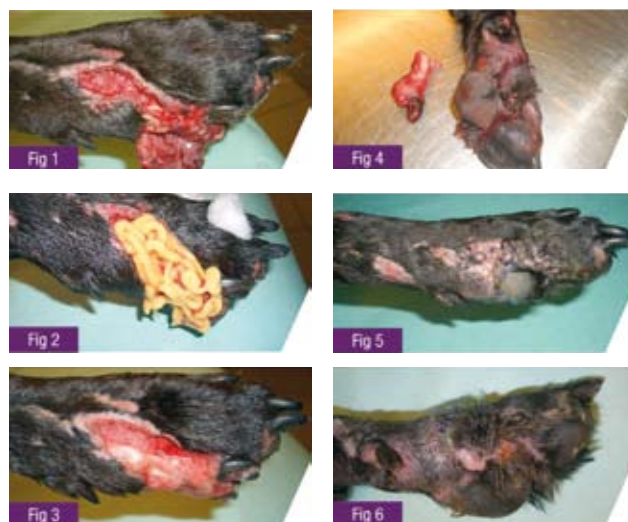
After 2 days the wound was looking clean and healthy. (Fig 3) The digit was then filleted out and the remainder of the wound closed with a pad flap. (Fig 4) 5 days after surgery the flap was holding well, although after a further 2 days a small area of the wound had begun to break down. (Fig 5) The dog was again examined under general anaesthetic, the wound edges were freshened up and extra sutures placed on the flap. The wound was then dressed with Algivon, Activon impregnated calcium alginate dressing to support the healing environment.

Outcome

Following dressing with the Alginate dressing 100% of the pad flap survived (Fig 6). Within 16 days from the initial date of injury the dressings had been removed and the dog was sent home with a buster collar. The wound healed with good cosmetic and functional results.

Dressing summary

The Activon Medical Grade Manuka Honey (Unique Manuka Factor +12) was used to help manage the local infection risk within the wound due to its antibacterial properties transferred from the nectar of the Manuka Bush. Autolytic debridement was also aided by the Activon as the high sugar level of 80% has an osmotic action of drawing fluid from the wound and softening and lifting necrotic tissue.



www.vetwoundlibrary.com - Dog #43

Advancis Medical has provided this brochure for general information only. Advancis Medical reserves the right to delete, modify or supplement the content of brochure at any time for any reason without prior notification. Products shown may not be available in all regions or from all wholesalers. Indications for use or contra-indications may vary from time to time depending on current clinical information and you should always read the package insert prior to use. Customer Service is available to help with product information or questions. The information provided here is intended for a health care professional and this is not an authoritative document or for public use. Advancis Medical makes no representations, warranties or assurances as to the availability, accuracy, currency or completeness of the contents of this brochure. Advancis Medical shall not be liable for any damages or injury resulting from your reliance on any information provided in this brochure. The content of this brochure are owned by Advancis Medical and is protected under applicable copyright and trademark laws. The content otherwise may not be copied or used in any way. Advancis Medical promotes open dialogue with healthcare professionals on all aspects of its products and developments and the company shall be free to use the content of any such communications, including any ideas, inventions, concepts, techniques or know-how disclosed therein, for any purpose including developing, manufacturing and/or marketing goods or services unless protected under a confidentiality agreement.

Another quality product selected and stocked by:

WM Bamford & Co Ltd p 0800-BAMFORD f 04-569-6489
e enquiries@bamford.co.nz www.bamford.co.nz

